

Certificate of Analysis

BACE1 (β -Secretase) FRET Assay Kit, Red , 1 Kit



Part Number: P2985
Lot Number: 1775474
Immediate Storage: -80°C
Shipping Conditions: dry ice

5791 Van Allen Way
Carlsbad, CA 92008
Phone: 760.603.7200
Fax: 760.602.6500
www.lifetechnologies.com

Components:

Description	Composition	Quantity	Part Number	Lot Number
BACE1 (β -Secretase), Recombinant Human	50 mM Tris (pH 7.5) and 10% Glycerol.	5 Units	P2947*	1681145B
BACE1 Substrate	75 μM , Rh-EVNLDAEFK-Quencher, in 50 mM ammonium bicarbonate.	45 μL	P2986	1719671B
BACE1 Assay Buffer	50 mM sodium acetate (pH 4.5) + proprietary reagents.	20 mL	P2988	1434742G
BACE1 Stop Solution	2.5 M sodium acetate	5 mL	P2987	1763231A
BACE1 Product Standard	25 μM , Rh-EVNL in 50 mM ammonium bicarbonate	25 μL	P2989	1766744A

*See individual COA

Storage and Handling: The performance of this product is guaranteed for 6 months from the date of purchase if stored and handled properly.

Description	Storage and Handling
BACE1 (β -Secretase), Recombinant Human	Store at -80°C . AVOID MULTIPLE FREEZE-THAW CYCLES.
BACE1 Substrate	Thaw when needed and refreeze at -20°C . Avoid subjecting these reagents to repeated freeze/thaw cycles. Vortex prior to use.
BACE1 Assay Buffer	Thaw upon receipt. Store at room temperature. Mix before use.
BACE1 Stop Solution	Thaw upon receipt. Store at room temperature.
BACE1 Product Standard	Thaw when needed and refreeze at -20°C . Avoid subjecting these reagents to repeated freeze/thaw cycles. Vortex prior to use.

Functional Testing:

Kit components are functionally tested for performance in the assay.

Certificate of Analysis

BACE1 (β -Secretase), Recombinant Human, 5 Units



Part Number: P2947
Lot Number: 1681145B
Immediate Storage: -80°C
Shipping Conditions: dry ice

5791 Van Allen Way
Carlsbad, CA 92008
Phone: 760.603.7200
Fax: 760.602.6500
www.lifetechnologies.com

Description:

BACE1 (β -Secretase), Recombinant Human from a cDNA sequence encoding amino acids 1-460 of human BACE1, corresponding to the ectodomain. Expressed in baculovirus infected insect cells. Purified BACE1(P2947) exists as the proBACE1 form having an apparent molecular weight of 55 kDa and an N-terminal sequence of TQHGIRLPLR.

Active Enzyme Concentration: 129.1 Units/mL.

Specific Activity:

1076 Units/mg. One unit is defined as the amount of BACE1 required to cleave one pmol of Rhodamine-EVNLDAEFK-Quencher in one minute at room temperature. Cleavage of the FRET peptide is monitored by an increase in fluorescence (Ex535 nm/ Em590 nm) in the following assay reaction: 250 nM Rhodamine-EVNLDAEFK-Quencher in 50 mM Sodium Acetate (pH 4.5) in a total volume of 30 μ L according to the BACE1 (β -Secretase) FRET Assay Kit, Red (P2985).

Concentration:

0.17 mg/mL total protein as measured using the Bradford protein assay with BSA as a standard.

Storage and Handling:

Store at -80°C. **AVOID MULTIPLE FREEZE-THAW CYCLES.**

Storage Buffer:

50 mM Tris (pH 7.5) and 10% Glycerol.

QUALITY ASSURANCE

Gel Information for BACE1 (β -Secretase), Recombinant Human

Page Description: The SDS-PAGE and/or Native PAGE were run on 4-20% Tris-Glycine Novex® gels (Catalog #: EC6025BOX).

Lane 1: Invitrogen™ BenchMark™ Protein Ladder (Catalog #: 10747-012).

Lane 2: 0.4 μ g BACE1 (β -Secretase), Recombinant Human

Lane 3: 0.8 μ g BACE1 (β -Secretase), Recombinant Human

Lane 4: 2 μ g BACE1 (β -Secretase), Recombinant Human

Lane 5: 4 μ g BACE1 (β -Secretase), Recombinant Human

Purity:

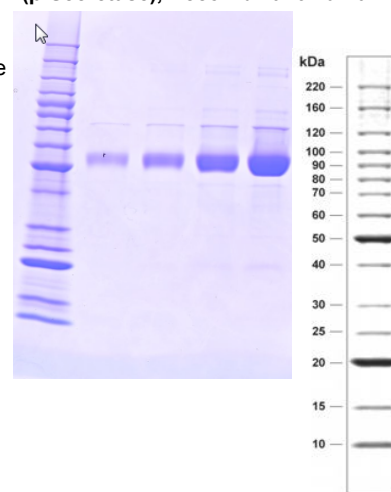
≥ 90%

Purity:

90% as determined by a Coomassie® blue stained SDS-PAGE gel.

Molecular Weight:

55 kDa. Calculated from the protein sequence and the N-terminal start position.



Certificate of Analysis

Part Number: P2947, Lot Number: 1681145B



Nichole Reaksecker, QA Manager

Date: 08/May/2015

Invitrogen™ is a trademark of Life Technologies Corporation.

Coomassie® is a registered trademark of Imperial Chemical Industries.

For Research Use Only. Not for use in diagnostic procedures.

For questions, please contact our Technical Support Team

N. Am Ph#: 800-955-6288 or INTL Ph#: 760-603-7200 Select option 5, ext. 40266 Email: drugdiscoverytech@lifetech.com